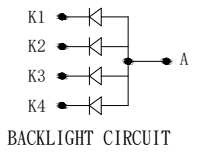


TFT Pin Out	
1	RESET
2	SDO
3	SDI
4	SCL
5	RS
6	CS
7	GND
8	VCC
9	LEDA
10	LEDK

CTP SPECIFICATION			
CTP Type	G+G	CTP Transmittance	≥85%
FPC Type	COF	Hardness	≥6H
LCM Resolution	240*RGB*320	Origin 02	Bottom Left
DRIVER IC	FT5426	Power Supply Voltage	3.3V
I/O Voltage	3.3V	Interface	IIC
IIC Address	0X70	IIC Communication speed	400Kbps
Frequency	60HZ		
Storage Temp	-30°C TO 80°C	Operation Temp	-20°C TO 70°C



CTP Pin Out	
1	VCC_3.3V
2	INT_3.3V
3	RST_3.3V
4	SCL_3.3V
5	SDA_3.3V
6	GND

Display Type	IPS/NORMAL Black/Transmissive
Display Resolution	240*(RGB)*320
Viewing Direction	FREE
LCD Controller/Driver	ILI9341V
Logic Voltage	2.8V
Operation Temperature	-20°C TO 70°C
Storage Temperature	-30°C TO 80°C
Backlight	White LED Backlight(TBD-WHITE LED) Vf =3.0~3.3V, If =80mA(Typ) Brightness = 530cd/m <sup>2</sup> 02
Remark	

REV	Revision content description	Date
03	Add brightness	2019.10.07
04	Change 3M tape	2020.02.23
05	Add alignment line	2020.04.20
06	Change to optics bonding and drawing cover	2020.09.08
07	DST change to Conductive DST, add 3M VHB4932 DST thickness	2020.09.22
08	Change the backlight	2020.12.01

## LCD WORLD LIMITED

Mod.Name: LW024CFSC1-02

TOLERANCE(公差)		DESIGNED(structure)		DESIGNED(electron)		APPROVED		DRAWING NAME
TOLERANCE UNLESS OTHERWISE SPECIFIED	X.X±0.3	UNIT	mm					ASSEMBLE