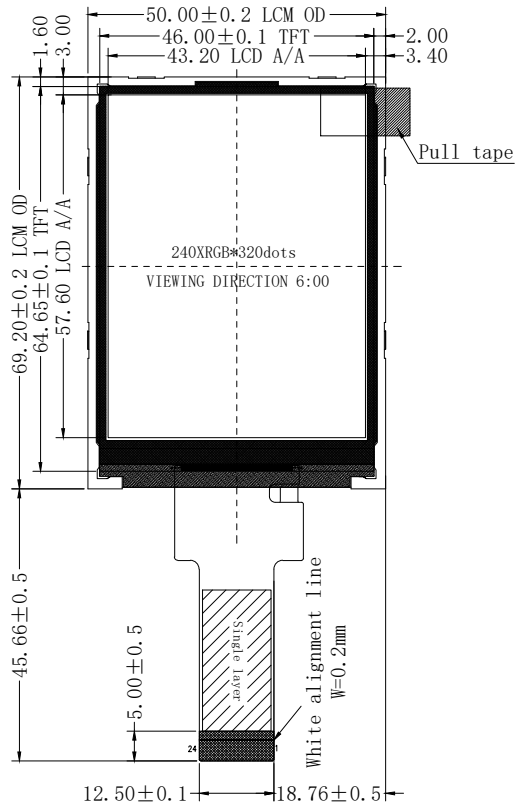
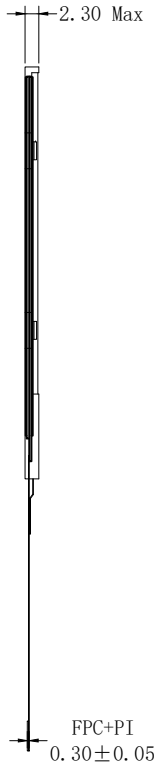


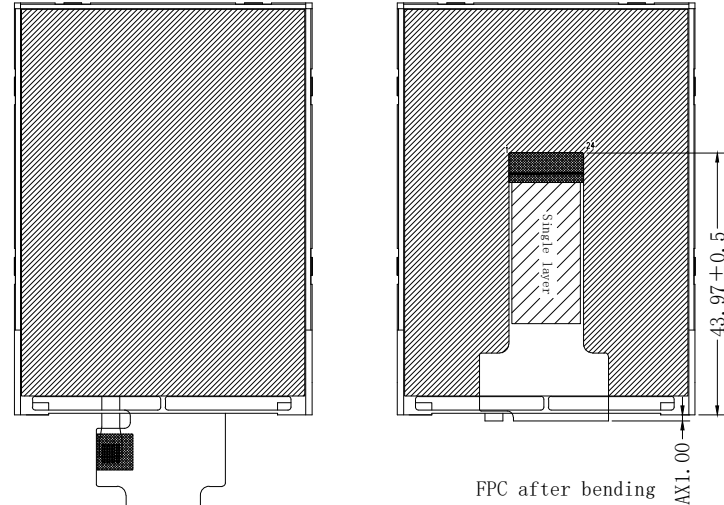
FRONT VIEW



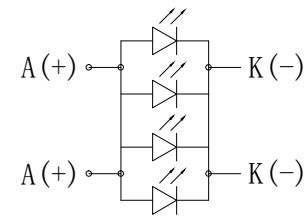
SIDE VIEW



REAR VIEW



BL CIRCUIT DIAGRAM



1	GND
2	LEDA
3	LEDK
4	GND
5	CS
6	RS
7	SCL
8	SDA
9	RESET
10	GND
11	TE
12	GND
13	VCC
14	IOVCC
15	GND
16	GND
17	GND
18	GND
19	GND
20	GND
21	GND
22	GND
23	GND
24	GND

Display Type	TN/NORMAL White/Transmissive
Display Resolution	240*(RGB)*320
Viewing Driection	6 O'clock(12 O'clock Gray inversion)
LCD Controller/Driver	ST7789V2
Logic Voltage	2.8V
Operation Temperature	-20°C TO 70°C
Storage Temperature	-30°C TO 80°C
Backlight	White LED Backlight(4PCS-WHITE LED) Vf = 3.0V~3.2V, If =80mA Brightness = 250cd/m2(Typ)
Remark	

REV	Revision content description	Date
01	FIRST ISSUE	2021.09.08

		LCD WORLD LIMITED		
TOLERANCE(公差)		Mod.Name		
TOLERANCE UNLESS OTHERWISE SPECIFIED X.X±0.3 X.XX±0.2		LW028CDSN1-03		
UNIT	DESIGNED(structure)	DESIGNED(electron)	APPROVED	DRAWING NAME
mm				ASSEMBLE