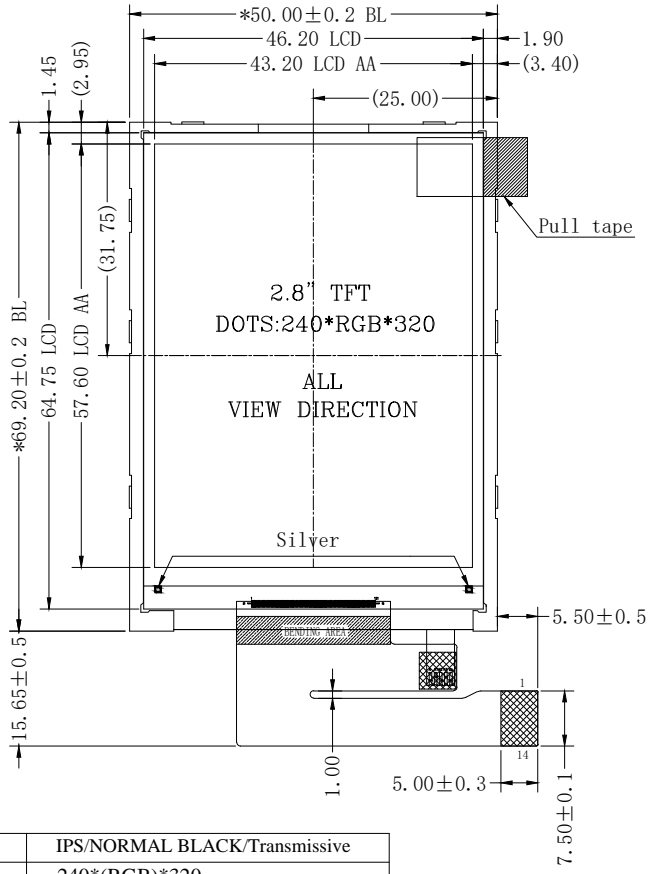
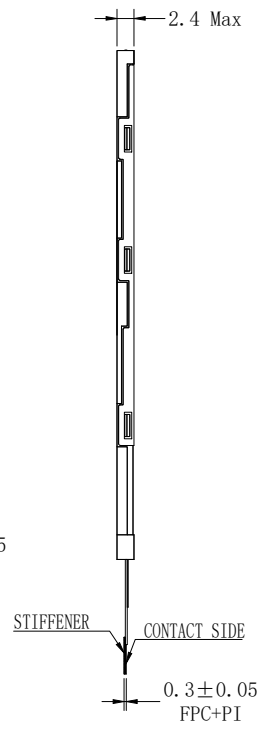


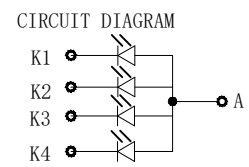
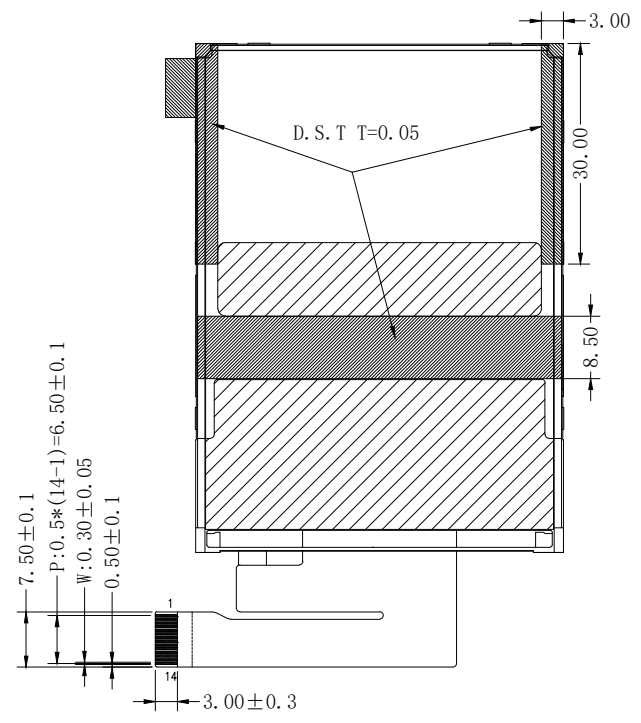
FRONT VIEW



SIDE VIEW



REAR VIEW



PIN	DESC
1	NC
2	NC
3	LEDK
4	LEDK
5	LEDA
6	GND
7	RESET
8	CS
9	SCL
10	RS
11	SDA
12	GND
13	VCC
14	GND

Display Type	IPS/NORMAL BLACK/Transmissive
Display Resolution	240*(RGB)*320
Viewing Direction	FULL
LCD Controller/Driver	ST7789V
Logic Voltage	2.8V
Operation Temperature	-20°C TO 70°C
Storage Temperature	-30°C TO 80°C
Backlight	White LED Backlight(4PCS-WHITE LED) Vf = 3.0V~3.4V, If =80mA Brightness = 200cd/m2(Typ)
Remark	

REV	Revision content description	Date
01	FIRST ISSUE	2021.08.13
02	Modify Operation Temperature	2022.06.09

LCD WORLD LIMITED

TOLERANCE(公差)		Mod.Name		
TOLERANCE UNLESS OTHERWISE SPECIFIED	X.X±0.3 X.XX±0.2	LW028CFSN3-01		
UNIT	DESIGNED(structure)	DESIGNED(electron)	APPROVED	DRAWING NAME
mm				ASSEMBLE